

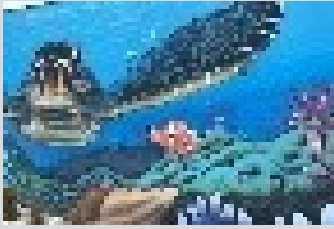
Sea Turtle Times

Safety Harbor Elementary
August 2021

Principal: Cecilia Palmer
Assistant Principal: Wendy Stryker
PTA President: Valerie Brown

535 5th Avenue N., Safety Harbor, FL 34695
(727) 724-1462

www.pcsb.org/safetyharbor-es
<https://www.facebook.com/shesseaturtle/>



Mark Your Calendar:

8/9 Open House

1st – 5th grade

Session 1 - 5:15-6:00 or

Session 2 - 6:15 -7:00

8/10 Meet the Teacher

Pre-K & K 2:00-3:00

8/11 - 8:15am Campus Opens

First day of school for all students

8:30 PTA Boo Hoo Breakfast

for parents of Kindergarten,

Pre-K or students new to

SHES – Media Center

8/24 – Scouting Night, 7pm

8/31 – Adult Volunteer

Orientation, 8am

Looking forward:

9/1 – 8:00am

Student Volunteer

Orientation

5:30pm Kindergarten Open

House

**Check our website
for upcoming events!**

August
Character Trait:
Respect!

Treating yourself
and others with
courtesy &
consideration

Welcome Back SHES Families!

Our school year with students is beginning tomorrow and we couldn't be more excited! We are so proud to be returning to school once again rated an "A" school by the Florida Department of Education! Congratulations to our students, families and staff for earning this recognition! Considering the last year and a half, this is truly an exciting accomplishment for all.

I would like to welcome back our returning students and welcome our new students to SHES! We also have a few new staff members to announce. Welcome back to Mrs. Tonia Hill – 3rd grade teacher. We have missed you and are happy that you are returning! Welcome to Mrs. Alisha Griffin – Teacher of ASD students 2nd/3rd Grade, Ms. Victoria O'Quinn – 2nd Grade Teacher, Mrs. Laverne Watts – CDA in one of our VPK classrooms and Ms. Crystal Chamberlain – Pre-K - ASD. We will announce our newest VPK teacher as soon as they are confirmed.

At the start of each school year I encourage families to establish supportive processes at home for students so that learning is reinforced with our parents as partners in the educational process. Some ways to prioritize learning at home includes - setting aside an area to complete homework, organize backpacks daily, review and sign agenda books daily. Regular communication with your child's teacher is extremely essential. Agenda books, e-mail, phone calls and parent conferences are all great ways to reach out for clarification or to gain strategies to support your student academically, socially and behaviorally.

With continued focus on our goal of increasing literacy performance at SHES, daily reading at home is an integral part of increased reading levels. Reading takes place in all curriculum areas and student success depends on the ability to decode, fluently read, comprehend and interpret what is read. Planning a time to read to or with your child nightly, for at least 20 minutes for primary and 30 minutes for intermediate, can make all the difference in your child's ability to tackle rigorous curriculum they will be encountering this school year. Students in Kindergarten through 2nd grade this year will be focusing on the new B.E.S.T. standards which your teacher will communicate.

Finally, families, please visit our [Travel to School Safely link](#) for SHES arrival/dismissal information. This is also posted on our school website and sent home via Peach Jar. The processes that we implement for arrival and dismissal are established to ensure student safety. We greatly appreciate your support by demonstrating to your child appropriate pedestrian and vehicle safety and your patience as everyone learns the routines the first week of school.

As always parents, if you have any questions or concerns, please feel free to contact the front office. I am looking forward to another great year!

Ms. Palmer ~ Principal

Principal's Pen

SHES PTA News



Student Drop off begins at 8:15am

First bell - 8:35am

Tardy bell – 8:45am

**Student School Hours 8:45am-
2:55pm**

**Breakfast and Lunch are
FREE for ALL students**

SHES School Communication Tools:

SHES Website

www.pcsb.org/safetyharbor-es

SHES Facebook Page

<https://www.facebook.com/shesseaturtle/>

Peach Jar - School Flyers

**Weekly School Messenger
e-mails and phone calls
from Ms. Palmer**

**If you need assistance accessing
these communication tools please
contact the front office or ask
your classroom teacher.**

We want to hear from you!

PTA is so happy to welcome you and your family back to school. Safety Harbor Elementary has a very active PTA and we want you to be a part of it!

What is PTA?

PTA stands for "Parent Teacher Association" and its mission is to be a powerful voice for all children, a relevant resource for parents, and a strong advocate for public education.

Locally, your SHES PTA also brings you time honored traditions like Fall Fest and Bingo for Books - and we are so excited to bring those events back in person this year!

PTA membership is just \$5 and you can join by using our QR code or on our MemberHub website (shown below). We have BIG membership goals this year and encourage the whole family to join, so please forward this link to Grandma and Grandpa, even if they live out of state. PTA Membership is a great way for relatives and family friends to stay connected to your child.

Does being a member mean you have to volunteer? Not at all! Membership simply means you support the mission of being a powerful voice for ALL children. So, join today and look for the PTA packet of information coming home in your child's backpack after the start of school.

Go to: <https://shes-pta.memberhub.com/store>

The PTA Board is here to serve you! Please feel free to reach out to any of our board members and anyone wearing an "Ask Me About PTA" button to find out more!

President – Valerie Brown

Vice President Fundraising – Kristen Penna

Vice President Programs – Janell Porter

Vice President Communications – Kristen Tsafatinos

Treasurer – Christine Putnam

Secretary – Katy Wilson

SHES PTA Email: shespta1@gmail.com

Shespta1@gmail.com

<http://www.ourshespta.org/>

FB: Safety Harbor PTA

<https://www.facebook.com/safetyharborpta>



Consider supporting SHES by becoming a Classroom Partner?

Sea Turtle Egg Level:
\$1 - \$99

Sea Turtle Hatchling Level:
\$100- \$199

Sea Turtle Kemp's Ridley Level:
\$200-\$299

Sea Turtle Loggerhead Level:
\$300- \$400

See the front office for details.



Do you need a SHES T-Shirt for Friday Spirit Days?
Visit
PTA Member Hub!

<https://shes-pta.new.memberhub.store/store>

VOLUNTEER CORNER

All returning volunteers must reactivate their volunteer account for the new school year. Log into the volunteer system with your username and password & answer the 8 questions listed. This must be done PRIOR to volunteering!

Interested in becoming a PCS volunteer? Complete the online application to get started:
www.pcsb.org/volunteerregistration



Want to change the life of a student? Consider becoming a mentor! Join our Lunch Pal program! Register to volunteer with Pinellas County Schools and take the mentor training workshop! Once you have completed the workshop the district will contact our school and we will set you up with a student.

Contact the front office for more details.

Become a Young Leader Helping Others!

We are looking forward to being able to resume the K-Kids club for the 2021/2022 school year!

More details to follow.



FSA Scores Are Available

<https://fsassessments.org/families.html>

Scores have uploaded into FOCUS, but more detailed/printed FSA reports will not be available to schools until after the first week in September. When posted on the DOE site, families can visit the above link for additional information about their student's performance. Congratulations to our teachers and students for earning an "A"!!

Notes from Nurse Jen!



Hand washing facts for kids What is hand washing?

Hand washing is the process of cleaning hands with water and soap. It is done to take off dirt, germs, and poisons. Germs and poisons cause diseases and other health problems. Germs are bacteria, viruses, or fungi. Some infections are not stopped by antibiotic drugs. Hand washing prevents lots of new disease spread. Not washing hands before cooking or touching food is risky.

Always wash hands:

After using the toilet, urinate, or defecate.

After touching an animal or pet, such as a dog, cat, or turtle.

Before and after touching or helping a sick person.

Before making or cooking food.

After touching uncooked meat, fish, or poultry (bird meat). Some uncooked foods carry diseases.

Before eating to prevent contamination of food from germs found on your hands.

After blowing one's nose/or sneezing into his/her hand.

Steps to washing hands:

1. Use soap and warm (running, if available) water.

2. Wet hands and add soap. Rub wet hands strongly with soap outside running water for more than 10 seconds.

3. Rub all parts of the hands again and again. Clean all dirt under fingernails.

4. Then rub hands under running water again and again to take off all soap.

5. Dry hands using a clean cloth or paper.

6. If your hands are being washed many times every day you may want to use moisturizing lotion to prevent the skin from drying out.

For more information on hand hygiene for children, go to: https://kids.kiddle.co/Hand_washing